

LAURA ASHLEY

IL4271

WINCHESTER 5LT CHANDELIER INSTALLATION INSTRUCTIONS

These instructions are provided for your safety.

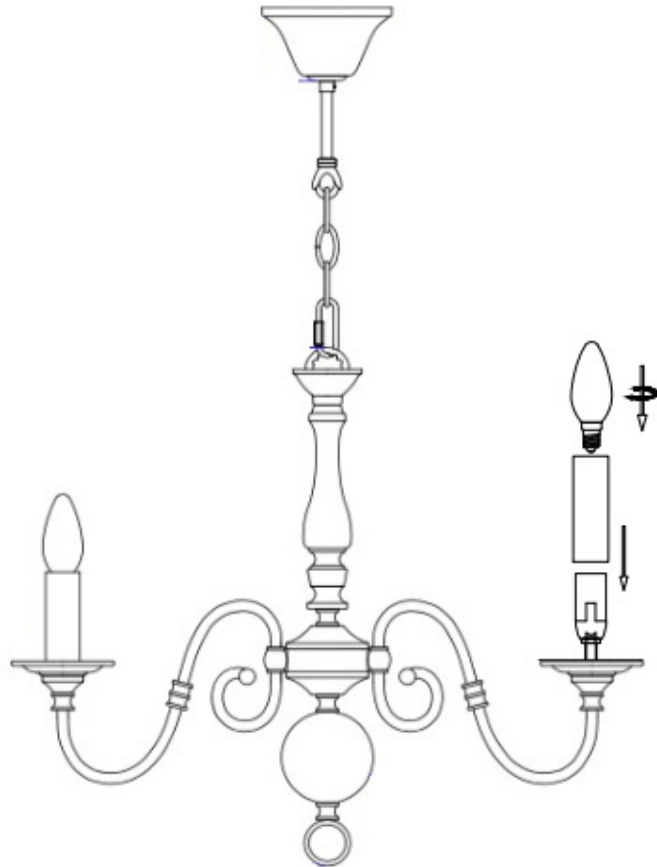
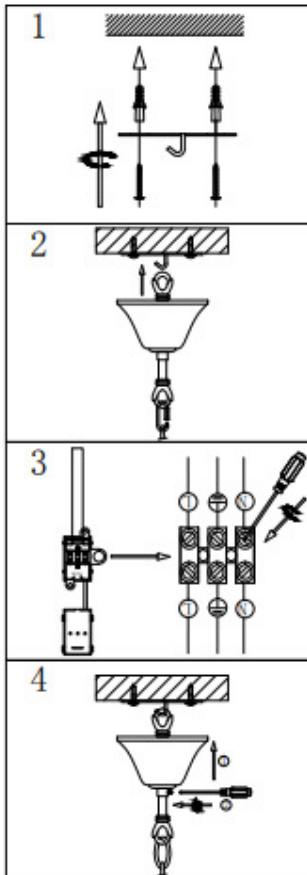
Please read carefully before commencing work and retain for future reference.

SAFETY INFORMATION

- * If you are in any doubt consult a person competent to give advice on the installation of electrical equipment.
- * This fitting should be fitted in accordance with IEE Wiring Regulations and the Building Regulations.
- * To prevent electrocution switch off at the mains supply before installing or maintaining this fitting. Ensure other persons cannot restore the electricity supply without your knowledge.
- * To avoid damage to concealed wiring during installation, establish the direction of the supply cable before drilling fixing holes.
- * This fitting is Class I = $\frac{1}{\text{I}}$ and should be fitted to a lighting supply (with earth) protected by a 5 amp fuse or equivalent circuit breaker.
- * Always be sure to use the correct type and wattage of bulbs as indicated on the fitting. Never exceed the wattage stated.
- * When changing the bulb, always switch off at the mains and allow the old bulb to cool down before handling. Dispose of used bulbs carefully.
- * Place this product out of direct sunlight.

INSTALLATION

1. Ensure the house electricity supply is off at the fuse board.
 2. Before removing the existing fitting, carefully note the position of each set of cables. If there are loop in cables that are not connected to the light these must be terminated in a separate terminal block not connected to the fitting.
 3. **Chain links may be adjusted** to reduce the overall height of the fitting. Using two pairs of pliers, carefully open the chain links and remove the required number to achieve the desired fitting height. Note: A cloth should be used between the jaws of the pliers to protect the decorative finish. Gently pull any excess cable through the ceiling cup. Attach the bottom adjustable chain link to the last link of the support chain and to the connection ring of the chandelier. The link is opened by twisting the barrel nut at the side anti-clockwise, hooking the chain link over the top ring of the chandelier and retightening to close the link. **IMPORTANT** ensure the chain is supporting the weight of the fitting and not the electrical cable.
 4. Fix the mounting hook to ceiling using suitable fixings. Ensure that the holes are drilled into a joist or other suitable mounting and not just the plaster.
 5. Carefully offer the looped-eye of the fitting located inside the bell-shaped ceiling cup over mounting hook taking care not to trap the wiring in the process. With the full weight of the fitting now supported the electrical installation can commence.
 6. **The weight of the fitting must be supported whilst making the electrical connections as follows:**
 - Connect supply live (normally brown or red) to fitting live (marked "L") on the terminal block.
 - Connect supply neutral (normally blue or black) to fitting neutral (marked "N") on the terminal block.
 - Connect supply earth (normally green/yellow or unsheathed) to earth (marked " $\frac{1}{\text{I}}$ ") on terminal block.
- NOTE:** Ensure electrical connections are tight and no loose strands of wire are left out of the terminal block before snapping the block shut firmly shut.
7. Slide the bell shaped ceiling cup upwards on the stem until it reaches the ceiling and conceals the mounting hook and wiring. Secure the cup in place by tightening the screw located at the side of the stem.
 8. Carefully place the candle drips over the lamp holder sections.
 9. **Fit the bulb:** Type and wattage as indicated on the fitting. **The wattage indicated must not be exceeded.**
 10. Switch on the electricity supply at the fuse board.



GENERAL INFORMATION

This fitting is designed for internal use only and must be fitted to a DRY SURFACE as any dampness in plaster or paint can damage the finish. **Do not use polish or abrasive cleaner - just a soft dry cloth.**