



## PRODUCT SPECIFICATION

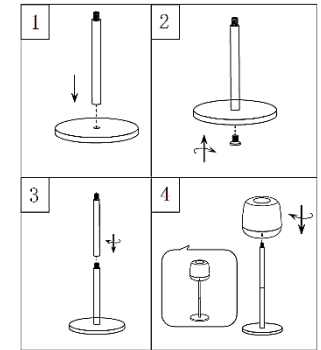
<b>Charge Voltage:</b>	5 Volts DC Charge cable provided USB-A to USB-C
<b>Lamp Type:</b>	LED (replaceable by a professional)
<b>Material:</b>	Polycarbonate body / Metal stand
<b>Battery Type:</b>	Li-on Lithium ion 1800mAh (1800mAh x 1 pcs) (replaceable by a professional)
<b>Battery Life Expectancy:</b>	Approx. 3 years - dependent on conditions
<b>Battery Charge Time:</b>	Fast-Charge (10 watts) approx. 4 hours. Standard charge (5 watts) approx. 6 hours
<b>Usage Time:</b>	Approx. 4 hours from fully charged. (100 % brightness)
<b>IP Rating:</b>	IP44 Outdoor
<b>Light Output LED:</b>	30Lm, 2700K + RGB colour changing
<b>Parts Included:</b>	2 x metal stems, 1 x base plate + fixings USB-A to USB-C Charge cable. <i>(Other proprietary cables may not work with this product)</i>

## ATTENTION!

- \* LED unit is supplied and fitted with Li-ion battery.
- \* LED circuit board and battery units are replaceable by a professional
- \* If the charge cable is damaged, it must be replaced.
- \* Improper opening of the device, tampering or changes to the product will invalidate the warranty.
- \* Use only the recommended USB power source and adaptor.
- \* We recommend charging this LED product indoors.
- \* Do not submerge this LED product in water.
- \* When not in use, ensure the USB charging socket does not get filled with debris or get wet, and use the cover where provided.
- \* Do not subject LED product to excessive heat, particularly at the top where the battery is situated.
- \* If the battery drains quicker than previously after a full charge, this may indicate it might be reaching the end of its useful lifespan.
- \* This product contains a light source(s) of energy efficiency class. 
- \*  This product contains LED circuit and Li-ion battery, dispose of these safely at their end of life.  
Please obtain disposal advice from your local authority.

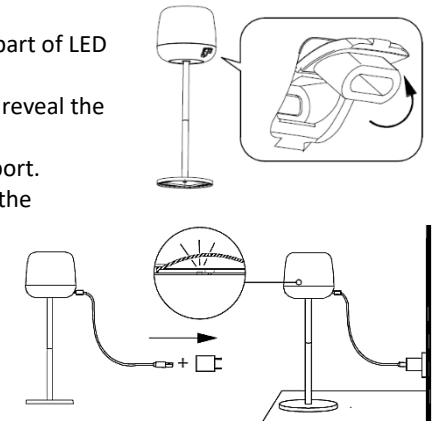
## ASSEMBLY

- 1) Locate base plate + fixings + 2 x stems.
- 2) Attach a stem onto the base plate, then secure it into position using the fixings provided.
- 3) OPTIONAL, screw the other stem onto the stem fixed onto base plate and make sure these are fully tightened.
- 4) screw the LED module onto the stem(s) attached to base plate, take care not to over tighten.



## CHARGING TABLE LAMP

- a) Locate an appropriate USB-C charge cable.
- b) Locate the USB-C charging port at the lower part of LED lamp.
- c) Carefully lift the USB-C charging port cover to reveal the charging port.
- d) Plug USB-C charging cable into the charging port.
- e) Connect the other end of the USB cable into the appropriate USB charge socket.
- f) Charging indicator LED light inside the lamp will illuminate **RED** to show there is a charge going into the battery.
- g) When the battery is fully charged, the charge indicator LED will change colour to **RED**. The charge cable can be safely removed.



## OPERATION

This product has 5 effects as follows.

- a) Locate the touch button on the side of the unit.
- b) 1st with light 2700K, 100% light.
- c) 2nd with light 2700K, 20% light.
- d) 3rd with light breath flicker effect.
- e) 4th with 100% light and RGB colour rotating light effect.
- f) 5th with only RGB colour rotating light effect.
- g) Holding down the touch button for 3 seconds will turn the LED light off



## **BATTERY SAFETY PRECAUTIONS**

- The battery must only be charged using a USB charger (standard or Fast-Charge)
- The product may only be charged with USB-A to USB-C charger lead. (supplied)  
**Important: Some proprietary charge cables may not be compatible for use with this product.**
- Do not attempt to disassemble, alter or apply heat to the battery!
- In case of leakage, do not allow liquid to come into contact with skin. If liquid is spilt on clothes or skin, immediately wash off with water.
- Should skin problems occur after handling this product, contact a doctor.
- Always unplug the LED unit from the charger when it is fully charged or when not in use.
- When the product is stored under 25 degrees Celsius, it can be left for up to 5 months. If left for longer than this period, charge it fully again.

**To maintain a longer battery life, we recommend you allow the battery to deplete at least once a month and then fully charge it before use.**

## **TROUBLE SHOOTING**

Should you experience any difficulties, check the fault types below:

<b>FAULT</b>	<b>POSSIBLE CAUSE</b>	<b>SOLUTION</b>
Unit does not work	<ul style="list-style-type: none"><li>• LED unit might have been switched off.</li><li>• Battery depleted.</li></ul>	<ul style="list-style-type: none"><li>• Make sure switch located on the top of the light is depressed to switch it on.</li><li>• Charge the battery using USB A to USB-C lead supplied and allow the LED light to turn to green.</li></ul>
Battery not taking charge	<ul style="list-style-type: none"><li>• Battery depleted.</li><li>• Connection issue</li></ul>	<ul style="list-style-type: none"><li>• Connect the charge cable and plug this into USB charger and make sure the charge indicator is illuminated.</li><li>• Unplug the charge adaptor and reconnect.</li></ul>
Battery gets depleted quickly.	<ul style="list-style-type: none"><li>• Battery might not have been fully charged as assumed.</li></ul>	<ul style="list-style-type: none"><li>• Ensure the battery is fully charged and the charge indicator shows green.</li><li>• It may be that the battery is coming to its end of its life.</li></ul>

*UK: dār Lighting Ltd, Wildmere Road, Banbury, Oxon, OX16 3JZ*  
*Ireland & EU: Dar Lighting Ireland Limited, Suite 108, Q House, 76 Furze Road, Sandyford Industrial Estate, Dublin 18*

**dār**<sup>®</sup>  
lighting group



**IP44 COLOUR CHANGING LED  
OUTDOOR POLYCARBONATE LAMP**

**USER INSTRUCTIONS**