

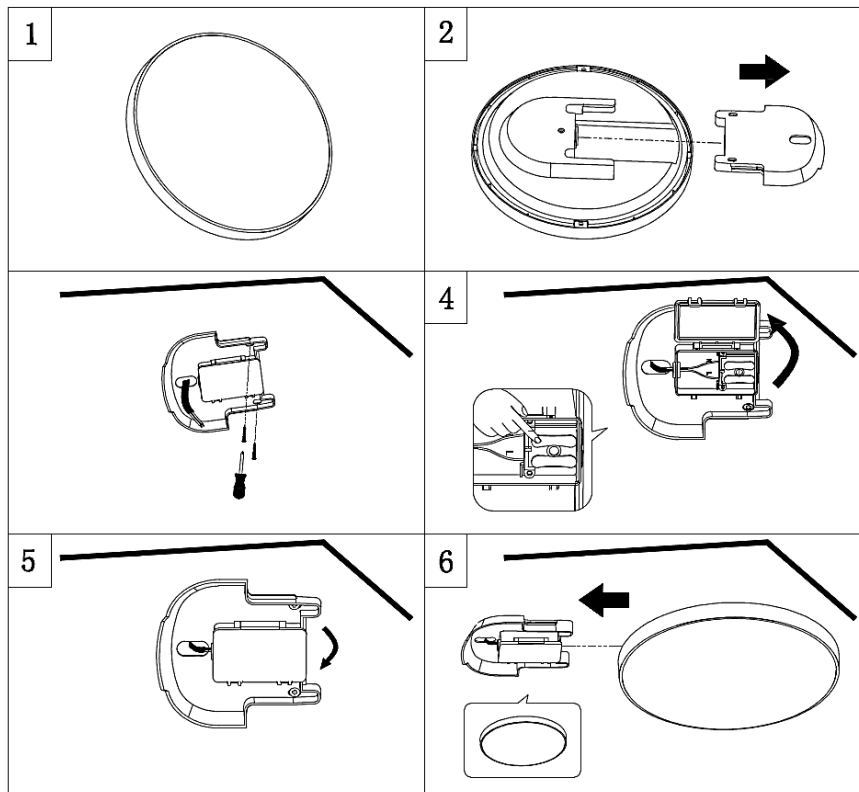


## SAFETY INFORMATION

- \* If you are in any doubt, consult a person competent to give advice on the installation of electrical equipment.
- \* We recommend that any electrical wiring in an outdoor environment is carried out by a qualified electrician. All wiring must comply with the current edition of the IEE wiring regulations and any relevant Building Regulations.
- \* This fitting is Class 2 =  therefore, no earth is required and should be fitted to a lighting supply protected by a 5 amp fuse or equivalent circuit breaker. The product should be connected to a supply protected by a 30mA RCD.
- \* Before installation and servicing, disconnect the electricity supply at the fuse board.
- \* To avoid damage to concealed wiring during installation, establish the direction of the supply cable before drilling or fixing holes.
- \* This product contains a light source(s) of energy efficiency class. 
- \* We recommend you do not attempt to replace any faulty components inside this product.
- \* **LED light source of this luminaire is not replaceable; when the light source reaches its end of life, the whole luminaire shall be replaced.**



## ASSEMBLY INSTRUCTIONS

1. Unpack the product from its packaging and dispose of these carefully. ①
2. Carefully slide out the connection cassette from the back of the fitting, **whilst taking care not to apply excessive force or put pressure on the diffuser.** ②
3. Offer the cassette in the location where the fitting is required and make sure there is ample space to slide the flush fitting into the cassette. ③ Then mark and drill the fixing holes.
4. Feed the supply cable through the cable entry hole, then attach the cassette to the ceiling, using suitable fixings.
5. Use a screw to carefully unclip the cassette electrical connection compartment. Feed the supply cable through the rubber grommet and into the compartment, while making sure there is a good, tight seal around the cable.
6. Make the electrical connections as follows. ④

Connect the supply live (normally brown or red) to the fitting live (marked "L") on the plastic casing terminal block.  
Connect supply neutral (normally blue or black) to fitting neutral (marked "N") on the plastic casing terminal block.

**Please note: No earth should be connected to any part of this fitting. If any earth wires are present, please terminate these in a separate terminal block (not supplied) to ensure that continuity is maintained for the earth circuit.**

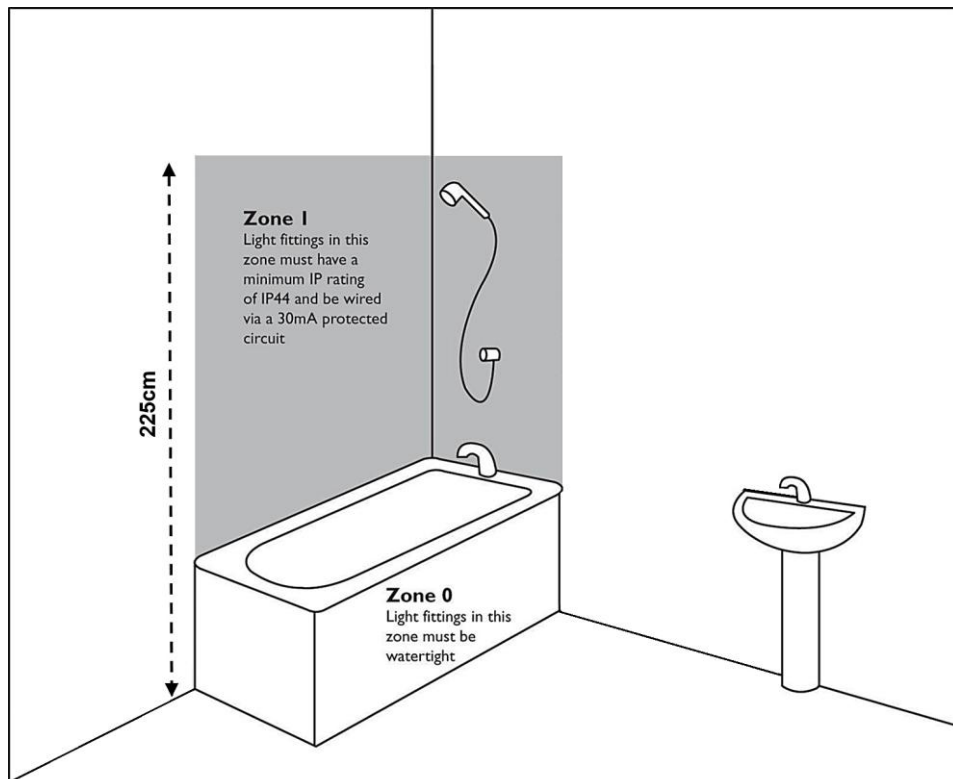
Ensure electrical connections are tight and no loose strands of wire are left out of the terminal block. Ensure the terminals and rubber sleeve are correctly seated.

7. Close the electrical compartment, whilst taking care not to force excess wires into the casing. ⑤
8. Slide the flush fitting over the cassette casing, ensuring the fitting has reached a stop. Do not slam or try to force fit by pushing too hard. ⑥
9. Switch on the electricity at the fuse board.

## GENERAL INFORMATION

This fitting is designed for internal use only and must be fitted to a DRY SURFACE, as any dampness in plaster or paint can damage the finish.

**Do not use polish or abrasive cleaner - just a soft dry cloth.**



**This light fitting is rated IP44 making it suitable for Zone 1**

*To register your product for an extended five-year warranty, please complete the simple form at*

**[www.darlighting.co.uk/warranty](http://www.darlighting.co.uk/warranty)**

*You'll need to fill in the details of the product, the retailer you purchased it from, and also the installer and the installation. Please also upload a clear copy of the original purchase invoice or receipt to complete this registration.*

**UK:** *där Lighting Ltd, Wildmere Road, Banbury, Oxon, OX16 3JZ*

**Ireland & EU:** *Dar Lighting Ireland Limited, Suite 108, Q House, 76 Furze Road, Sandyford Industrial Estate, Dublin 18*

**där**<sup>®</sup>  
lighting group



**IP44 LED POLYCARBONATE SEALED  
FLUSH FITTING**

**ASSEMBLY INSTRUCTIONS**